

PointX

Diagnostic measuring tool!



Quick and accurate damage analysis measuring with documentation capability

PointX™ derives its strength from new generation technology, both in the hand-held measuring arm and software. The lightweight, efficient and easy to use measuring arm, in combination with Car-O-Data, the world's most comprehensive vehicle database, gives you an affordable measuring system that allows you to accurately and quickly target measuring points.

Constructed with a carbon fibre material, the **PointX*** measuring arm is extremely lightweight making it easy for technicians to manoeuvre around the vehicles to be measured, whether they are on a lift, on an alignment bench or right on the floor.

Not only is **PointX** easy to operate, it is driven with Vision2 Software, a photobased system that guides the entire repair process. With our comprehensive measuring data, Vision2 and **PointX** your technicians will be able to provide highest quality diagnosis to your customers.

Features and Benefits

- Ergonomic lightweight carbon fibre construction
- Automatic height calculation and default set software speeds up the measuring process
- Upper body Point-To-Point measurement capability
- Easy to learn, process orientated software interface
- Bluetooth communication with Vision2 PointX Software
- Access to Car-O-Data - measurement data with over 7 000 measured vehicles for PointX
- Compatible with Car-O-Tronic electronic measuring system adaptors
- User friendly, one-handed operation through magnetic fixing
- Electronic documentation with report print out

Vision2 PointX Software —

Completes the most comprehensive hand-held electronic measuring system on the market.

Car-O-Liner's Vision systems guide the entire repair process and perform automatic centering, measuring and documentation.

Vision2 - PointX, compatible with **PointX**, is integrated with Car-O-Data, the world's largest vehicle database, making it easy to find



One technician can easily manage the entire diagnosis

all the vehicle information you need, with updates available via internet. This photo-based system also helps you to find the correct measuring points.

Vision2 - PointX has an improved, easy-to-learn intuitive workflow presented in a new user-friendly interface featuring state of the art graphics. All these features working together contribute to reduced cycle times and safer, more efficient alignment work.

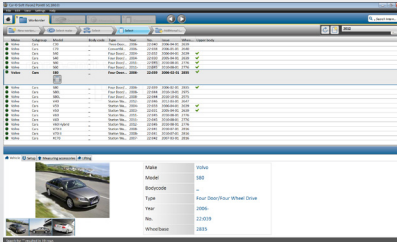
“Save time - make money!”

*Design is registered and protected by international Copyright laws

Measuring with PointX is quick and easy:

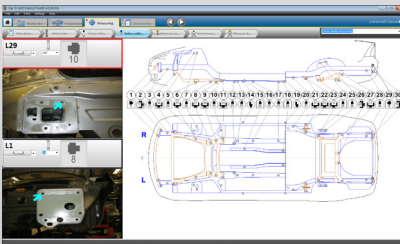
The **PointX** software is advanced, user-friendly and filled with new and exciting features. It is simple to learn and use. Three easy steps is all it takes:

1



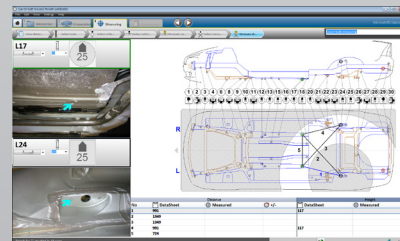
Select the vehicle year and model and download the data sheet from the database

2



Select the measurement points you wish to measure or check

3



Measure and repair the vehicle according to the measuring points you have selected. Enter the measurement values and print out or save the report



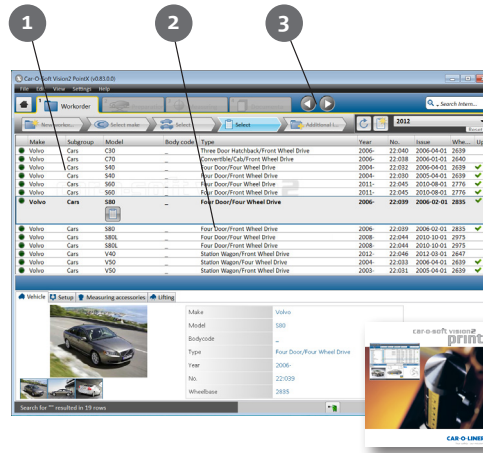
Follow us on Facebook



Discover us on car-o-liner.com



Watch us on YouTube



To find a datasheet

1. Scroll to required make and subgroup
2. Click the required model
3. Click "Download datasheet"

The World's Largest Vehicle Database

Covering nearly all new and updated vehicles – presently more than 7,000 models for **PointX** and 14,000 models in total – Car-O-Data consistently provides access to current and reliable data. When integrated with the **PointX** software, it truly realizes its enormous potential. New and updated vehicles are continuously measured by our international measuring team in cooperation with automotive manufacturers around the world.

One year of Car-O-Data included

The PointX measuring system entitles you to one year of exclusive access to Car-O-Data over the internet. Car-O-Data is also available on DVD as a yearly subscription with quarterly updates.

Increase both repair quality and profits

With our comprehensive measuring data you will see an immediate improvement in the level of quality your technicians put into every repair.

TECHNICAL DATA

Minimum length (with adapter)	300 mm 740 mm
Maximum length (with adapter)	1400 mm 2000 mm
Height (inc. Indinometer)	600 mm
Weight	0.9 kg
Minimum P2P	300
Maximum P2P	2000
Horizontal adapter	Yes
Battery service life	5000 Measurements

PointX includes:

- A new generation electronic measurement arm with colour display
- 1 year's subscription to Car-O-Data
- High quality case



Innovative



Integrity



Willingness to change



Winning spirit

CAR-O-LINER®

Your safety - our mission

CAR-O-LINER is recognized for its leadership in the marketplace by continuously delivering high quality products and exceptional customer service.

Distributor

www.car-o-liner.com